







Hola, ¿Me puedes ayudar? ¿Puedes contar los trozos de pastel que han comido los monstruos? Para hacerlo tendrás que hacer sumas de la siguiente manera.

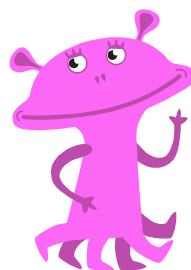
1º.-Fíjate en la ficha de las sumas.

$11 + 9 = 20$  Veinte	$\square + \square = \square$ 
$\square + \square = \square$ 	$\square + \square = \square$ 
$\square + \square = \square$ 	$\square + \square = \square$ 

Tienes que hacer 5 sumas.

Para saber qué número debes escribir en estos cuadrados

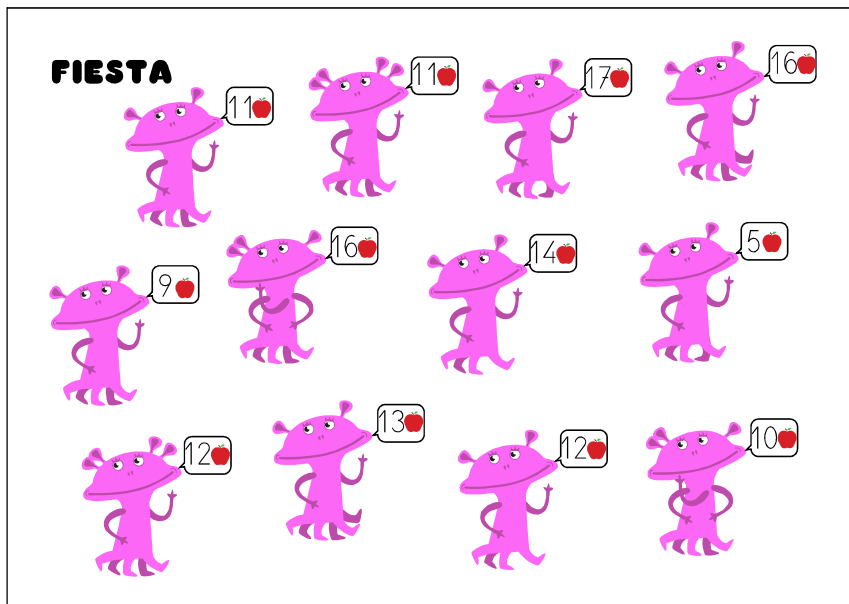
$$\square + \square = \square$$



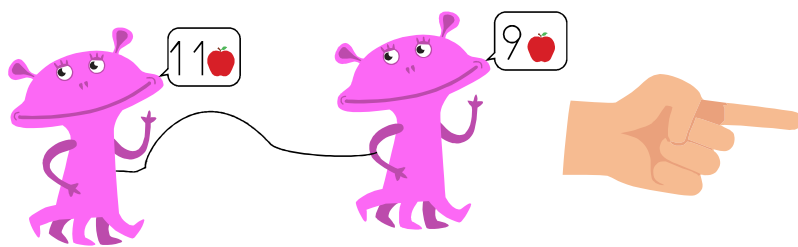
tendrás que buscar en la ficha de la fiesta los monstruos que son iguales y sumar las manzanas que dicen que han comido.




Fíjate en los monstruos que hay en la fiesta, aunque parezcan todos iguales, son distintos. Hay 6 parejas de monstruos distintos.



Busca los dos monstruos que son iguales, úmelos con una línea y suma los números que les acompañan usando la ficha de las sumas.

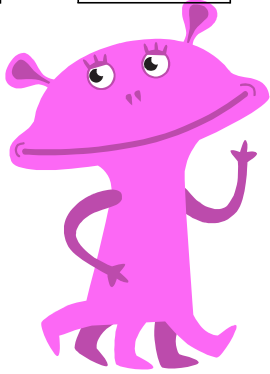


11	+	9	=	20
				
Veinte				



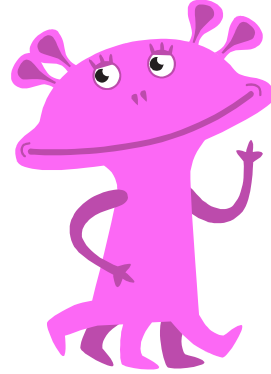
No te olvides escribir el número de la suma debajo del monstruo.

$$11 + 9 = 20$$

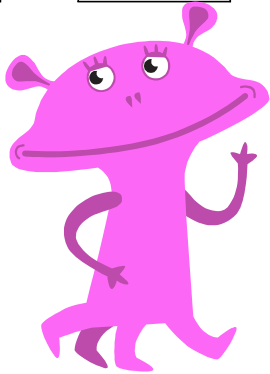


Veinte

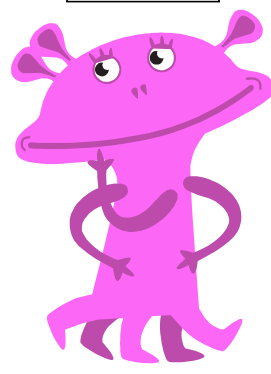
$$\square + \square = \square$$



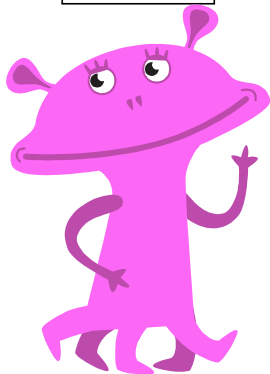
$$\square + \square = \square$$



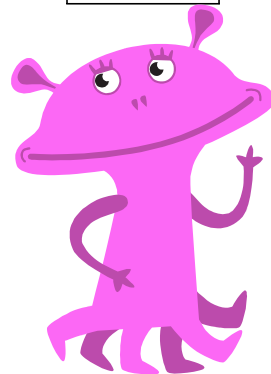
$$\square + \square = \square$$



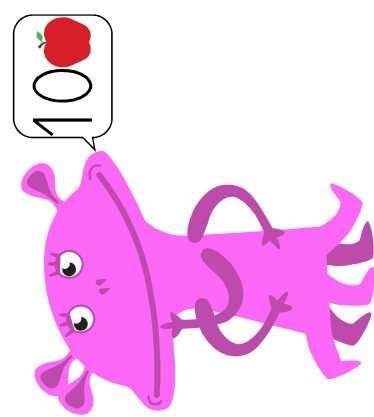
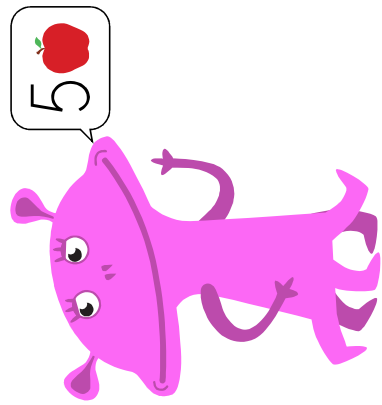
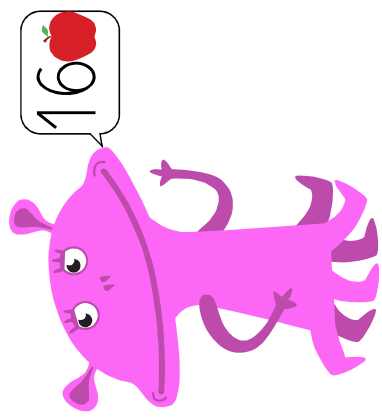
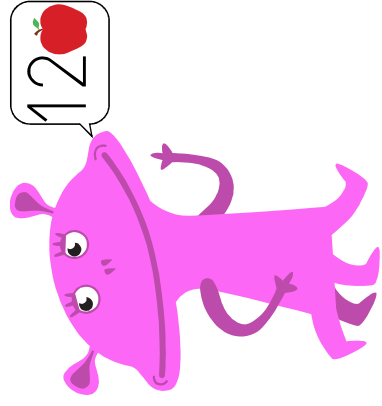
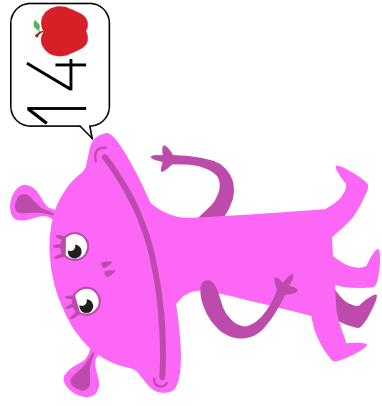
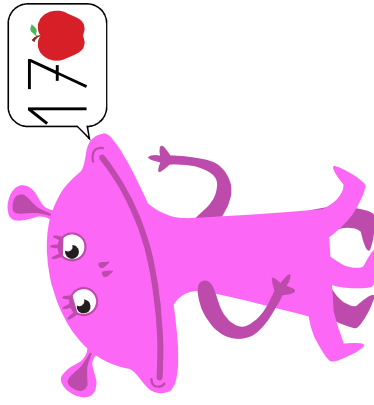
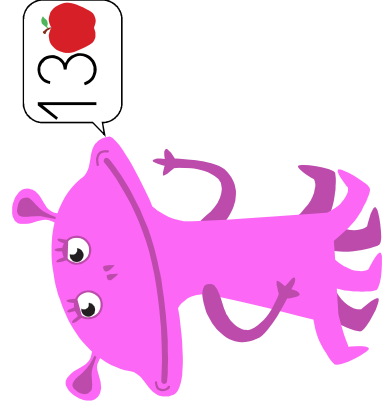
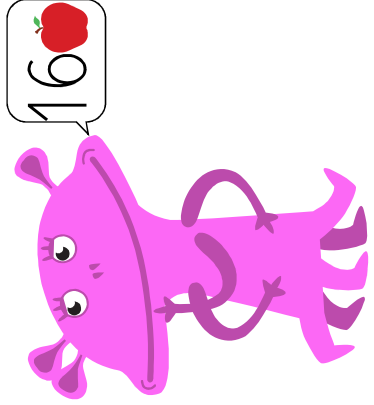
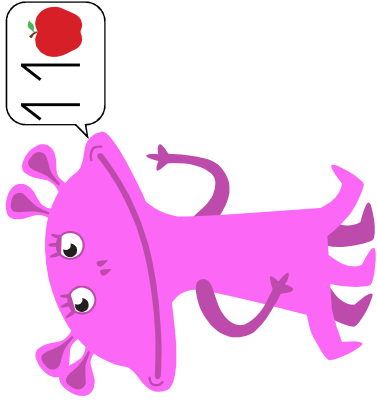
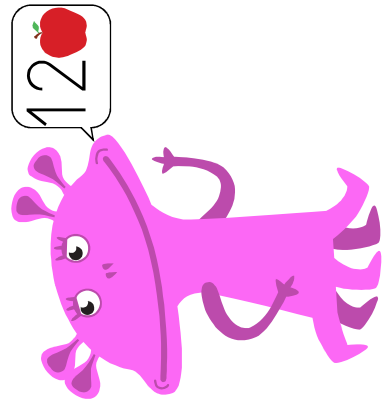
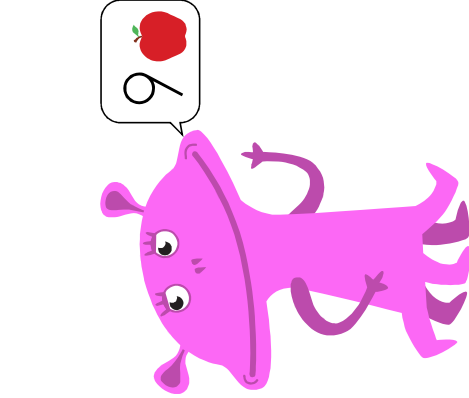
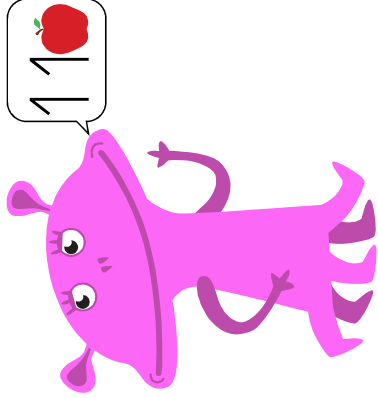
$$\square + \square = \square$$



$$\square + \square = \square$$



FIESTA



- 1.- $11 + 9 = 20$ veinte
- 2.- $12 + 11 = 23$ veintitrés
- 3.- $14 + 12 = 26$ veintiséis
- 4.- $16 + 5 = 21$ veintiuno
- 5.- $17 + 10 = 27$ veintisiete
- 6.- $13 + 16 = 29$ veintinueve